

Motherboard Interface

P1 Pinout looking into connector

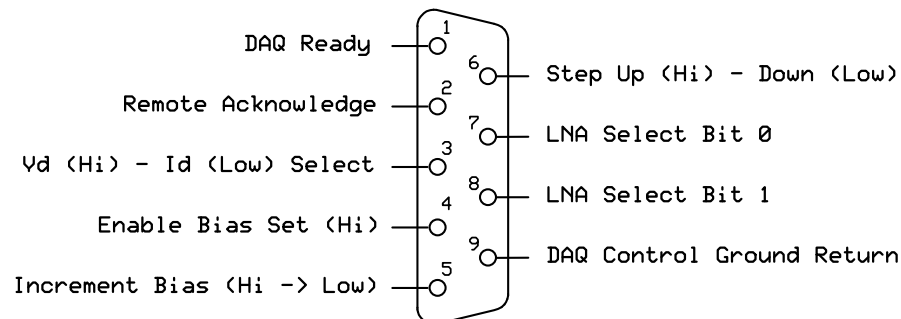
Connector key positioned on left, as shown

Remote Acknowledge	02	10	DAQ Ready
Enable Bias Set (Hi)	04	30	Vd (Hi) - Id (Low) Select
Step Up (Hi) - Down (Low)	06	50	Increment Bias (Hi -> Low)
LNA Select Bit 1	08	70	LNA Select Bit 0
DAQ Control Ground Return	010	90	Spare (no connection)
Bias Monitor Reference	012	110	Drain Current Bias Monitor
Drain Voltage Bias Monitor	014	130	Gate Voltage Bias Monitor
LNA1 Drain Bias	016	150	LNA1 Gate Bias
LNA2 Drain Bias	018	170	LNA2 Gate Bias
Bias Return	020	190	Bias Return
LNA3 Drain Bias	022	210	LNA3 Gate Bias
LNA4 Drain Bias	024	230	LNA4 Gate Bias
+12V Power	026	250	Bias Return
-12V Power	028	270	+/-12V Power Return
+5V Power Return	030	290	+5V Power

Connector Type: Waldom/Molex 2x15 0.1" CGrid-III
Housing 90142-0030, P/N WM8046-ND
Fem Crimp terminals 26-28 AWG 90119-2121, P/N WM2561-ND
Fem Crimp terminals 22-24 AWG 90119-2110, P/N WM2559-ND

Control Cable Interface

J2 Pinout looking into connector



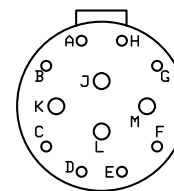
Connector Type: 9-terminal Micro-D or DB Socket (Female)

Note:

J1 pinout is changed from previous revisions

LNA Cable Interface

J1 Pinout looking into connector

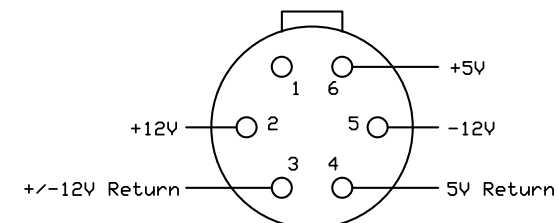


A - LNA1 Drain Bias
B - LNA1 Gate Bias
C - LNA2 Drain Bias
D - LNA2 Gate Bias
E - LNA3 Drain Bias
F - LNA3 Gate Bias
G - LNA4 Drain Bias
H - LNA4 Gate Bias
J - Bias Return
K - Bias Return
L - Bias Return
M - Bias Return

Connector Type:
Amphenol 14-12 Panel Receptacle, P/N PT02A-14-12S

Power Cable Interface

J3 Pinout looking into connector



Connector Type: HiRose HR10-7R-6P

CSO Electronics Caltech

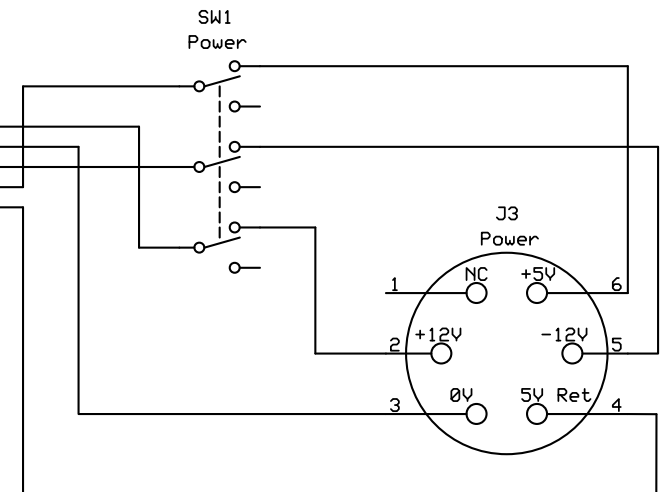
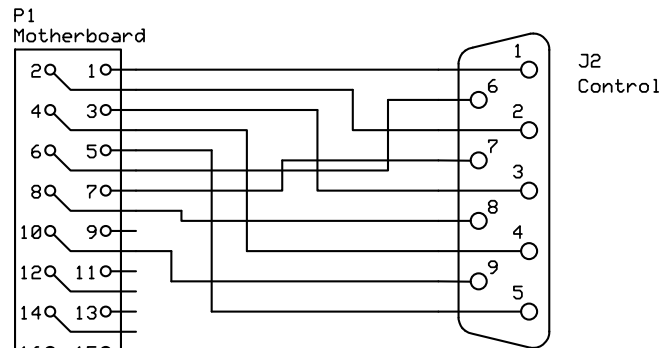
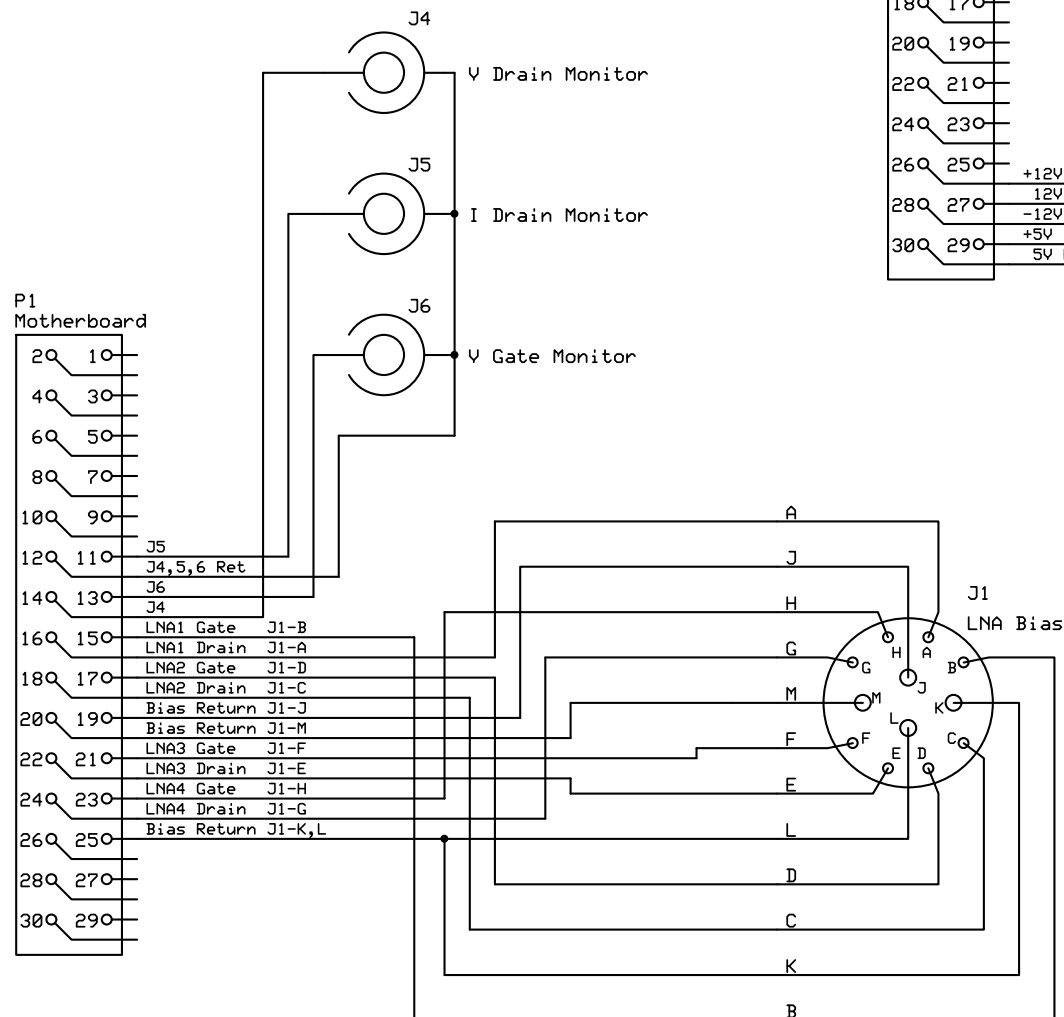
LNA Wiring Harness

F. Rice

Rev 2.0
2/12/09

Page 1 of 2

Note:
P1-10 connects to J2-9
Leave P1-9 unconnected



CSO Electronics Caltech

LNA Wiring Harness

F. Rice

Rev 2.0
2/12/09

Page 2 of 2